



Helping You Express
Humanitarian Kindness
in the Toughest Places



ANNUAL REPORT 2022

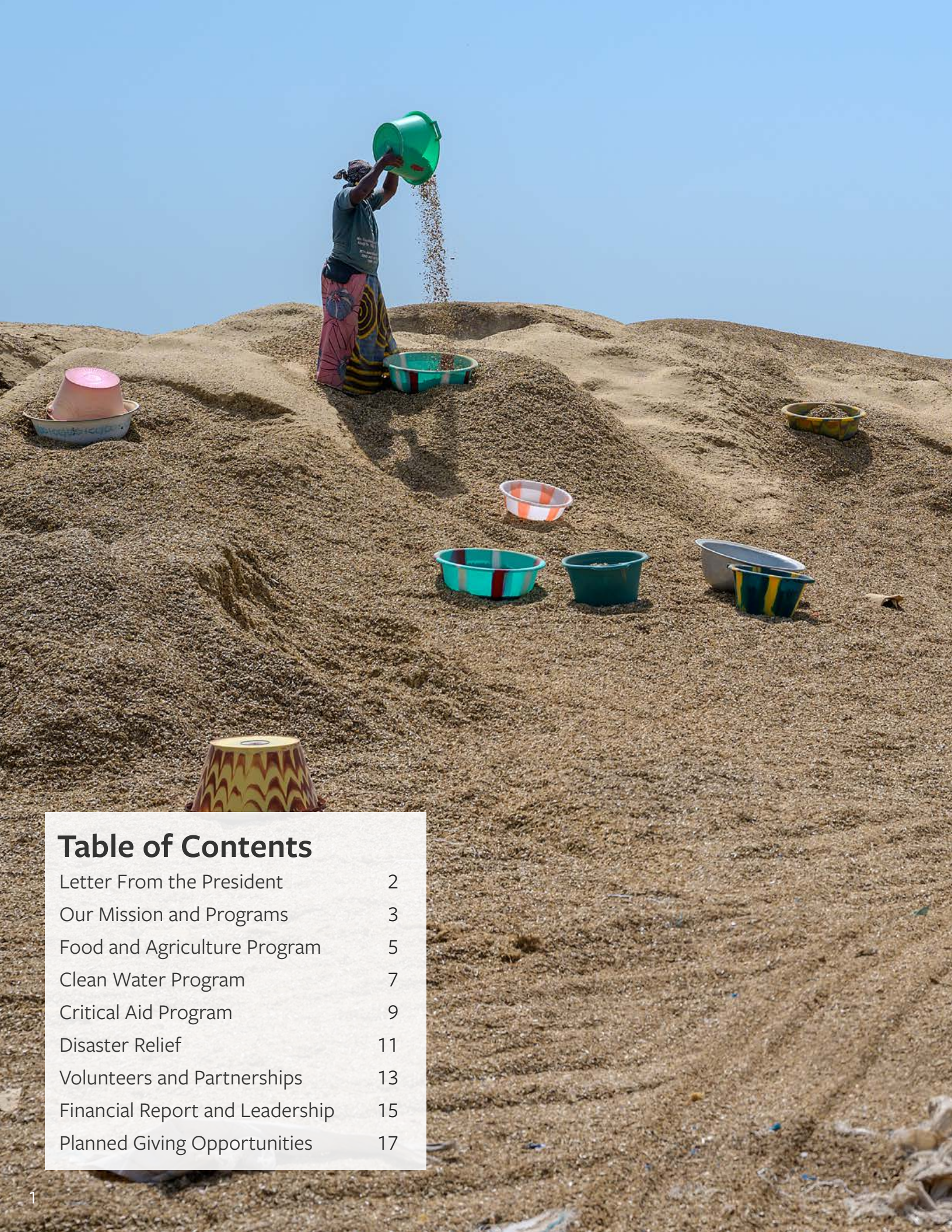


Table of Contents

Letter From the President	2
Our Mission and Programs	3
Food and Agriculture Program	5
Clean Water Program	7
Critical Aid Program	9
Disaster Relief	11
Volunteers and Partnerships	13
Financial Report and Leadership	15
Planned Giving Opportunities	17

SHARING HOPE IN THE TOUGHEST PLACES

Together we are going to the toughest places and serving those with no other access to help or the message of hope. The woman pictured at left is just one example. She is sifting through hills of peanut shells, searching for leftover pieces to feed her family. People like you helped provide her with meals and the opportunity to hear about Jesus.

Dear Friends,

It has been another unprecedented year. Yet even in the midst of war, drought, famine, and disaster, lives have been transformed. Your partnership provided suffering people — who might otherwise be unreachable — with help and hope when they needed it most.

Fueled by the support of generous donors, Unto® expresses humanitarian kindness to people in the toughest places. This allows our staff teams to access the unreached, build credibility with local leaders, and increase the effectiveness of their work.

Here are just a few highlights from 2022:

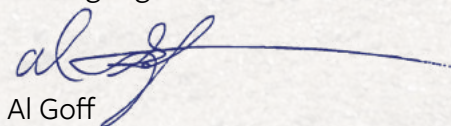
- More than 2.2 million suffering people, living on every major continent, experienced kindness through lifesaving humanitarian aid.
- Refugee children in Lebanon had the opportunity to attend school, receive basic items, and learn about hope.
- An unreached village in Zimbabwe received access to safe, clean water, and now the community is thriving.
- Local Ukrainian teams turned a church building into a place of refuge for those fleeing conflict and provided people with shelter, meals, and prayer.

As we look ahead, I am reminded of the opportunity each of us has to make a difference. With so much suffering in our world today, what breaks my heart most is that people are hungry and thirsty — and are living without hope. Even with all our innovations and resources, more than 3.5 billion people have never encountered true hope or help. Most of these people live in the toughest places where families cannot afford basic supplies or where war has left them struggling to survive.

Now is our opportunity to step in and offer help and hope! Anne Frank's words still challenge us today, "How wonderful it is that nobody need wait a single moment before starting to improve the world."

I hope you share my excitement for all that is ahead and for the opportunities placed before to serve more individuals and families in critical need. Your generosity and service relieves suffering, restores dignity, and reveals hope to people in the toughest places. Thank you for partnering with us as we celebrate the lives that have been transformed and look forward to sharing help and hope with even more unreached people in 2023.

Serving together,



Al Goff

EXPRESSING HUMANITARIAN KINDNESS

Our Mission: Unto expresses kindness in the toughest places on earth by relieving suffering, restoring dignity, and revealing hope. For almost 30 years, Unto has leveraged strategic global partnerships and the service of dedicated volunteers to relieve suffering in more than 75 countries.

Meeting Needs Through Three Programs

The generosity of ministry partners allowed Unto to respond to the physical and spiritual needs of 2.2 million people in 2022. We accomplish our mission in partnership with international Cru ministries through three programs:

Food and Agriculture

Around the world hunger and malnutrition claim lives and cripple communities. The Food and Agriculture Program provides people facing food insecurity with nutritious meals and seed packs. Our in-country partners distribute them to people who need food most and develop lasting relationships so our work can continue.

Clean Water

Shortages of safe, clean water and a lack of sanitation and hygiene create the most significant source of suffering on earth. The Clean Water Program helps our partners drill and repair wells, distribute water filters, and provide hygiene training — meeting physical needs and creating opportunities for people to hear about hope.

Critical Aid

Impoverished or displaced people need basic care to help them build a better and brighter future. The Critical Aid Program gives suffering people like refugees and victims of disaster throughout the developing world lifesaving essentials, including health-related items, temporary shelter, medical supplies, blankets, clothing, and shoes.

Our Relationship with Cru[®]

The humanitarian programs at Unto are crucial to the strategy of equipping our partners as they seek to express kindness in tangible ways to people they serve around the world.

Cru is one of the largest Christian ministries in the world. They serve in virtually every country on earth, representing most of the world's population.

By enhancing the ministry of international and domestic Cru partners with humanitarian assistance and coaching, Unto fulfills its mission by providing partners with access to unreached people groups. We also help our partners build credibility in the eyes of governments and authorities. In many cases humanitarian aid is the main reason their work is allowed to continue in the toughest places.



Your Global Impact

This year you expressed humanitarian kindness to more than 2.2 million people living in the toughest places. Your service and generosity relieved their suffering, restored their dignity, and revealed hope to individuals in every major region of the world.

Africa
1,690,765 people



North Africa, the Middle East, and Central Asia
281,773 people



Latin America / Caribbean
157,886 people



Europe
42,243 people



Southeast Asia
29,684 people



North America / Oceania
26,614 people



FOOD AND AGRICULTURE

The number of people experiencing acute hunger has more than doubled over the past two years. Many of the countries where people are experiencing severe food insecurity or famine are also cut off from help and hope. Generous donors supply meals to suffering people who are struggling to survive amidst the current food crisis and introduce them to and share hope when they need it most.

Finding Hope While Waiting for Help

Ayana* and her children were waiting — hoping.

They live in a region of Ethiopia that faces the worst drought seen in decades. More than 8.1 million people have been affected by the lack of water. Families, children, and the elderly have suffered most.

As part of a nomadic people group, Ayana's community depends on the rain to grow grass for their pasture animals. But when drought struck the country and everything dried up, they were left with no source of food, water, or income.

On the day local staff members visited the area, many children and older adults were waiting for assistance. They were so relieved to see that help had come.

As the team visited each family, they learned about each of their needs. When they came to Ayana's small hut, they discovered she had just given birth to a new baby the week before. Yet she had no food for herself or her two other children.

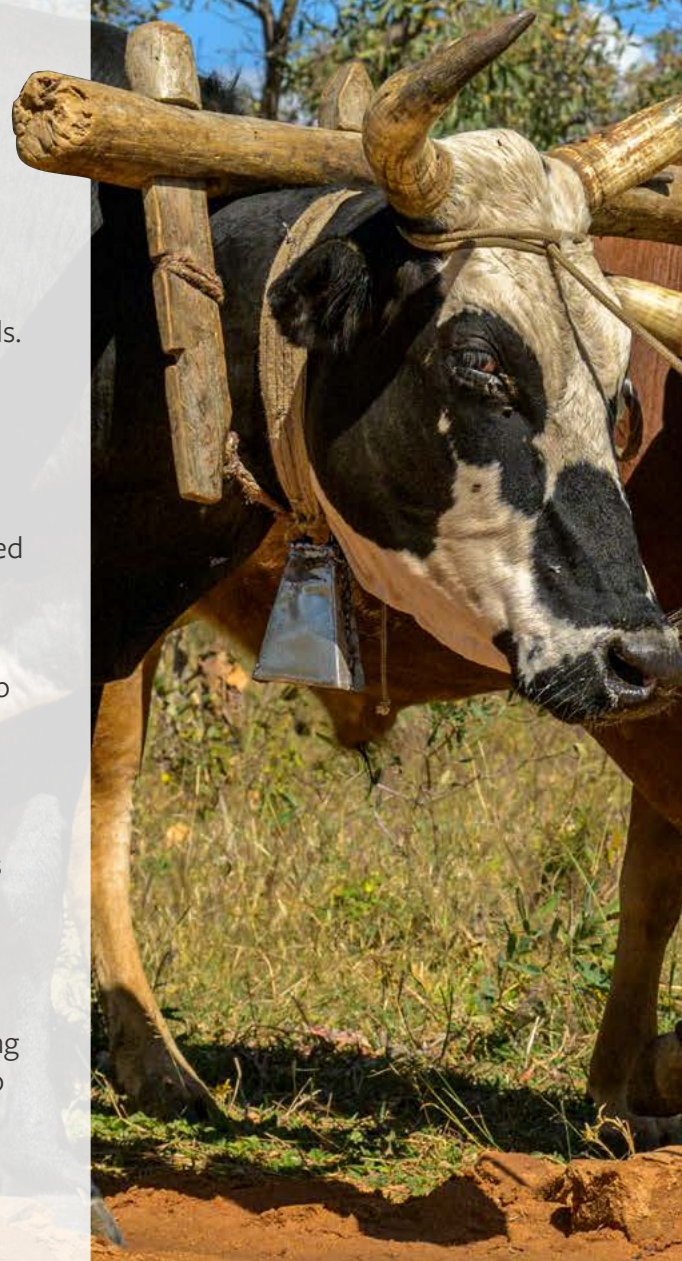
When the staff team brought meals and supplies to her, she knew it was from God. She blessed the team and eagerly listened as they talked with her.

Ayana's people group has very little access to help or the message of hope. But as the local team met tangible needs and built a relationship with her family, they had the opportunity to offer hope and encouragement. They had never experienced such kindness and were overjoyed!

More than 1,200 households received meals and other essential items thanks to the generosity of people like you. The entire community was so grateful, and local government officials also expressed their appreciation to the team for their support.

Local staff members and partners have spent time serving and building relationships among people in Ayana's community. They will follow up with her and many others served. The gift of meals came at just the right time — and created opportunities for an entire community to experience kindness and hope.

**Name changed for security purposes.*





A Message Too Good to Keep to Themselves

Mr. Matume encountered true hope and just had to share it.

Families in his village used to lack access to safe, clean water. They had no choice but to walk for miles in search of clean water — or to drink from contaminated sources. With the pandemic sweeping across the globe, their need became even more critical.

Without a source of clean water, families nearby were at risk of deadly waterborne diseases. And without the ability to practice proper hygiene, they were also more likely to contract COVID-19.

Despite lingering complexities caused by COVID-19, faithful partners like you made it possible to drill a new well in Mr. Matume's village. Local Unto staff team members shared about hope during the well-opening ceremony, and he responded to the message.

He immediately developed a relationship with our in-country staff member and joined a small group. He also began serving others in his community and sharing about the hope he had found.

Today Mr. Matume and his wife frequently welcome others into their home. They host community gatherings and rejoice in the changes taking place in their village.

Many people in this rural area of Zimbabwe had never encountered true hope. By but serving the community and building relationships, more people are discovering the difference help and hope can bring. Another staff member has been serving men at the community's rural business center. Their lives have also been transformed by the support people like you provide.

Local staff members continue to follow up with people in the community. They have formed small groups that provide ongoing training and support. And they continue to share help and hope.

For Mr. Matume and others, the message of hope is too good to keep to themselves. They just have to share it.



CLEAN WATER

More than 2.2 billion people worldwide lack access to safe drinking water. Even more cannot practice basic hygiene. Generous donors help alleviate the most significant source of suffering on earth by enabling Unto and our local partners to drill clean water wells, repair damaged wells, provide water filters, and teach hygiene techniques — expressing humanitarian kindness to people living in the toughest places on earth.





You Can Hear Them Learning From 100 Yards Away

In the toughest places children are among those who suffer most. And when they live in a new land, far from home, the challenges they face can be even more difficult. Often they are unable to attend school, while their families struggle to access basic items. But thanks to your generosity, refugee children in Lebanon are learning about hope and building a brighter future.

Currently more than 1.5 million Syrian refugees call Lebanon home. But the country's financial meltdown — considered one of the worst in centuries — has left people struggling to survive. The Port of Beirut explosion and the pandemic caused even more misery.

In one part of the country, our local team members operate an organization that serves as a school and humanitarian aid distribution point for Syrian refugees. Many children from nearby refugee camps come to the location for their education, and many of their families receive lifesaving critical aid.

Amazing changes are taking place in the area. At school the children learn how to read and write. They are also learning to pray and memorize Scripture. Many children have responded to the message of hope.

Each day at school the children repeat together the literature they are memorizing. They also take turns leading the class in responsive prayer. They love learning and are not quiet about it. Families living in tents 100 yards away from the school can easily hear the children as they exuberantly recite their lessons and prayers.

Despite the suffering so many refugees face, the lives of children and their families are being transformed by the help and hope you provide. Your generosity allows them to access the basic items they need for survival. They are receiving an education. And they are building a brighter future.

CRITICAL AID

Today an unprecedented 100 million people have been displaced from their homes. People are suffering due to war, poverty, famine, and drought. Unto provides lifesaving critical aid to relieve their suffering, restore their dignity, and reveal hope. Local team members personally distribute the aid to those who need it most. Our team members also build relationships with those served, and at the right time, they share about hope.



DISASTER RELIEF

When crises strike people need immediate help — and hope. Disaster relief focuses on providing suffering people with critical aid at lifesaving speed, responding to the unique needs of victims in the toughest places. The Unto disaster response team conducts a swift assessment to determine an effective response to victims of disaster and then works to provide things like food, water, temporary shelter, and other resources.

Kindness in the War Zone

On February 24 the people of Ukraine suddenly faced the terrors of war. After months of conflict, over 7.4 million people have fled to neighboring European countries and millions more remain internally displaced within the country.

Thanks to the generosity of people like you, six huge shipping containers, packed with lifesaving items — meals, clothing, blankets, and medical supplies — were sent to our partners in Ukraine and bordering countries. As people walk away from their homes and leave everything behind, local staff teams are mobilized to offer help and share hope.

One local Ukrainian church turned their building into a place of refuge for weary travelers fleeing the country. Rows of beds fill the space where church services were once held — and each one is occupied by nightfall. Together with the local staff team, they provide people with a warm meal and a place to sleep as they make their way to the border.

Recently Dima* arrived at the church with his grandfather. When their hometown faced armed conflict, they were forced to flee. The two men planned to cross the Ukrainian border and seek refuge in Poland, but they needed a place to stop and rest for the night. Our local partners welcomed them and provided each of them with a bed and an evening meal.

As they talked with our local staff members, Dima asked for prayer. Our team members had the opportunity to pray with him and his grandfather and shared about hope. The two men listened and were so grateful for the help they each received.

Local staff teams report that many people are asking questions, seeking prayer, and responding to the message of eternal hope during this difficult time. Your gifts to express kindness to individuals living in a war zone provide them with a tangible reminder that no matter what they face, people see what they are going through and care about their needs.

**Name changed for security purposes.*



VOLUNTEERS AND PARTNERSHIPS

Organizations such as churches, corporations, universities, and nonprofits utilized volunteer opportunities at Unto for serving others. People around the globe benefited from their hours of service, community outreach, team building, international missions events, and community responsibility. The time volunteers give is invaluable and has a significant impact on the lives of countless individuals around the world.

Volunteers Are Essential to Expressing Kindness

During this fiscal year 9,665 volunteers helped pack essential supplies such as meals, seeds, and critical aid to be shipped to our staff team members and distributed to people in the toughest places.

More than 31 university students and other volunteers helped with disaster relief. By serving on international humanitarian trips, 72 people joined our field staff team members to conduct vision clinics and plant gardens.

Partnerships Make Humanitarian Ministry Possible

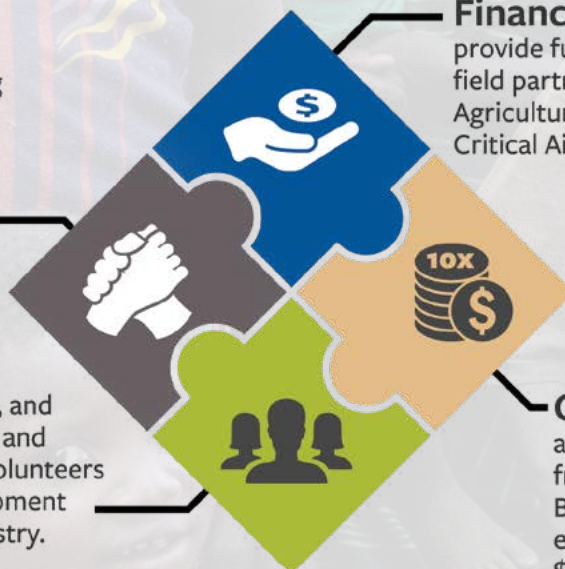
Individuals, churches, like-minded ministries, corporations, and Cru field staff members are central to Unto's ministry. How will you partner with Unto — will you give, pray, or go?

Unto Field Partners

create strategies for relieving suffering and increasing ministry effectiveness. Unto responds by engaging others who can help provide resources to meet those needs.

Other Partners

such as individuals, churches, and organizations provide prayer and financial support as well as volunteers who help prepare aid for shipment or travel for short-term ministry.



Financial Partners

provide funding that helps Unto fulfill field partner requests for Food and Agriculture, Clean Water, and Critical Aid Programs.

Gift-in-Kind Partners

allow Unto to leverage funding from financial partners. Because of donated goods, every \$1 given translates into \$10 worth of aid distributed.



FINANCIAL REPORT AND LEADERSHIP

Our Pledge to You: We seek to maintain the highest standards of integrity before our partners and before you. Unto abides by the Evangelical Council for Financial Accountability (ECFA) standards of responsible stewardship in its management of donations. Our goal is to maximize every ministry dollar to best serve those living in the toughest places on earth.



Board of Directors and Officers

Mark Gauthier, Chairman of the Board

Douglas Briley, Director

Charles Chappell, Director

Jennifer Culver, Director

David Hazelton, Director

Darryl Smith, Director

Al Goff, Director, President and CEO¹

Barbara Bouchard, Secretary

Mark Tjernagel, Treasurer/CFO

Dave Weier, Controller

¹ Al Goff, like all other missionary staff members for Unto, raises funding to cover the costs of his salary, training, ministry, and fundraising expenses. These costs are independently determined by the Human Resources and Staff Support functions of Cru.



2022 Revenues & Transfers

Gifts-in-Kind	\$11,650,437
Contributions	\$ 5,187,999
Contributed Services	\$ 1,011,000
Other Revenue	\$ 939,587
Equity Transfers ²	\$ 3,241,595
Total	\$22,030,618

2022 Expenses

Program Services	\$ 16,948,269
General & Administration	\$ 1,044,268
Fundraising	\$ 1,575,567
Total	\$19,568,104



Leadership Team

Al Goff, President and CEO

Stephen Hunt, Director, Leadership Development and Human Resources

Joan Kanne, Leadership Development and Human Resources

Michelle Oney, Executive Vice President, Advancement

Brooks Shull, Chief of Staff

Brad Supple, Vice President, Field Operations

Dave Weier, Controller

² Note: In accordance with not-for-profit accounting guidance, the value of staff services provided to Unto by Cru (Unto's parent organization) is presented in the Statement of Activities as an Equity Transfer rather than as Contributed Services revenue. For 2022 the value of these contributed services is \$3,241,595; this value is also recorded across Unto's three Expense functions. There is no effect on Unto's Net Income or its Net Assets.

PLANNED GIVING

Endowment gifts relieve suffering for generations. They are easy, and they can provide you with significant tax benefits. Gifts of any size can be made to the Maximum Impact Endowment Fund at Unto and ensure humanitarian kindness and hope will be shared now and for years to come.

Endowment Gifts Relieve Suffering for Generations

The Maximum Impact Endowment Fund at Unto is essential. It allows our teams to be nimble, enables innovation, and provides fuel for growth. It positions the ministry to respond quickly to critical issues, providing humanitarian aid and creating opportunities to share the message of hope.

We are seeking partners to help grow the endowment in order to serve more people and respond to urgent needs as they arise. Your gift will provide consistent, sustainable funding that allows Unto to meet the most urgent needs from the field and provide the infrastructure necessary to support our three programs: Food and Agriculture, Clean Water, and Critical Aid.

Endowment Assurances

- Ensures organizational mission continues for years to come
- Provides for wise philanthropic investments today and safeguards your charitable interests for generations
- Offers a consistent source of sustainable funding to meet urgent needs and support Unto's programs

Give to the Endowment Today

In just three simple steps, you can impact generations in the toughest places.

CONTACT
info@unto.com

Gifts of any
size qualify

DONATE
Today

Explore tax benefits with
one of our advisors

YOUR GIVING
Continues Forever

Carry your legacy
into the future

For more information visit unto.com/legacy or contact info@unto.com.



“How wonderful is it that nobody need wait a single moment before starting to improve the world.”

Anne Frank



RELIEVE SUFFERING
RESTORE DIGNITY
REVEAL HOPE™
THROUGH HUMANITARIAN AID

